



2025 Community Reinvestment Act Statement



#PeopleFirst



Choice Bank (a division of Choice Financial Group) adopts and publishes this Community Reinvestment Act Statement in compliance with the Community Reinvestment Act of 1977.

BRANCH LOCATIONS & HOURS

Location	Address	Phone Number(s)	Lobby Hours	Drive-Up Hours
Belfield, ND	201 Main Street N Belfield, ND 58622	Bank (701) 575-8282 Insurance (701) 575-8178	Monday – Friday 9:00AM – 3:00PM	Monday – Friday 8:00AM – 5:00PM
Beulah, ND (Wealth Only)	117 Highway 49 N Beulah, ND 58523	Wealth Management (701) 873-4117	Monday – Friday 9:00AM – 3:00PM	N/A
Bismarck, ND	1050 E Interstate Ave. Bismarck, ND 58504	Bank (701) 258-3300 Insurance (701) 224-7044	Monday – Friday 9:00AM – 3:00PM <i>By Appointment Only</i> 3:00PM – 5:00PM	Monday – Friday 8:00AM – 5:00PM Saturday 9:00AM – 12:00PM
Bloomington, MN	4470 W. 78th St. Circle, Suite 100 Bloomington, MN 55435	Bank & Insurance (952) 830-9999	Monday – Friday 9:00AM – 3:00PM	N/A
Dickinson, ND	323 18th Street W Dickinson, ND 58601	Bank (701) 483-8282 Insurance (701) 483-1864	Monday – Friday 9:00AM – 3:00PM	Monday – Friday 7:30AM – 5:00PM Saturday 9:00AM – 12:00PM
Dickinson, ND (Insurance only)	103 1st Avenue W #200 Dickinson, ND 58601	Insurance (701) 483-1864	Monday – Friday 8:00AM – 5:00PM	N/A
Eagan, MN	2640 Eagan Woods Drive Eagan, MN 55121	Bank & Insurance (651) 289-2222	Monday – Friday 9:00AM – 3:00PM	N/A
Ellendale, ND	83 Main Street Ellendale, ND 58436	Bank (701) 349-8282	Monday – Friday 8:00AM – 3:30PM	N/A
Fargo, ND	4501 23rd Avenue S Fargo, ND 58104	Bank (701) 356-9700 Insurance (701) 356-9895	Monday – Friday 9:00AM – 3:00PM	Monday-Friday 8:00AM – 6:00PM Saturday 9:00AM – 12:00PM
Fargo, ND (Wealth only)	3050 Sienna Drive S Fargo, ND 58104	Wealth Management (701) 282-3100	Monday – Friday 9:00AM – 3:00PM	N/A

BRANCH LOCATIONS & HOURS CONTINUED

Location	Address	Phone Number(s)	Lobby Hours	Drive-Up Hours
Golden Valley, MN	6210 Wayzata Boulevard Golden Valley, MN 55416	Bank & Insurance (763) 398-3333	Monday – Friday 9:00AM – 3:00PM	N/A
Grafton, ND	645 Hill Avenue Grafton, ND 58237	Bank (701) 352-0242 Insurance (701) 352-0242	Monday – Friday 9:00AM – 3:00PM	Monday-Friday 8:00AM – 5:00PM Saturday 9:00AM – 12:00PM
Grand Forks, ND	1697 S 42nd Street Grand Forks, ND 58201	Bank (701) 746-6010 Wealth Management (701) 775-8666	Monday – Friday 9:00AM – 3:00PM	Monday-Friday 8:00AM – 6:00PM Saturday 9:00AM – 12:00PM
Grand Forks, ND	4501 S Washington Street Grand Forks, ND 58201	Bank (701) 738-4300 Wealth Management (701) 738-4330	Monday – Friday <i>By Appointment Only</i>	Monday-Friday 9:00AM – 5:00PM
LaMoure, ND	119 South Main Street LaMoure, ND 58458	Bank (701) 883-8282 Insurance (701) 883-7777	Monday – Friday 9:00AM – 3:00PM	Monday – Friday 8:00AM – 4:30PM
Langdon, ND	210 Eighth Avenue Langdon, ND 58249	Bank (701) 256-2141 Insurance (701) 256-2101	Monday – Friday 9:00AM – 3:00PM	Monday-Friday 8:00AM – 5:00PM Saturday 9:00AM – 12:00PM
Moorhead, MN	801 Main Ave, Suite 103 Moorhead, MN 56560	Bank (218) 359-3600	Monday – Friday 9:00AM – 3:00PM	Night Drop Monday-Friday 7:00AM – 9:00PM Saturday-Sunday 8:00AM – 5:00PM

BRANCH LOCATIONS & HOURS CONTINUED

Location	Address	Phone Number(s)	Lobby Hours	Drive-Up Hours
Roseville, MN	2100 West County Road C Roseville, MN 55113	Bank (651) 900-8888	Monday – Friday 9:00AM – 3:00PM	N/A
Steele, ND	115 Broadway E Steele, ND 58482	Bank (701) 475-2301 Insurance (701) 475-2360	Monday – Friday 9:00AM – 3:00PM	Monday – Friday 8:00AM – 5:00PM
Walhalla, ND	407 12th Street Walhalla, ND 58282	Bank (701) 549-3761 Insurance (701) 549-3761	Monday – Friday 9:00AM – 3:00PM	Monday-Friday 8:00AM – 5:00PM Saturday 9:00AM – 12:00PM
West Fargo, ND	210 Sheyenne Street West Fargo, ND 58078	Bank (701) 277-9258	Monday – Friday <i>By Appointment Only</i>	Monday-Friday 8:00AM – 6:00PM

CUSTOMER SUPPORT HOURS

The bank has a toll-free help line available Monday-Friday from the hours of 8:00AM – 5:00PM (CST) – (888) 894-1357

The debit card helpline is available 24 hours a day/7 days a week – (877) 865-1680

ATM MACHINE LOCATIONS

Bismarck, ND	1050 E Interstate Ave (Bank Drive-Up)
Dickinson, ND	323 18th St W (Bank Drive-Up)
Ellendale, ND	83 Main St (Bank Entrance)
Fargo, ND	4501 23rd Ave S (Bank Drive-Up)
Grafton, ND	645 Hill Ave (Bank's East Entrance)
Grand Forks, ND	4501 S Washington S (Bank Drive-Up)
Grand Forks, ND	1697 S 42nd St (Bank Drive-Up)
LaMoure, ND	119 Main St SE (Bank Drive-Up)
Langdon, ND	210 8th Ave (Bank Entrance)
Steele, ND	115 E Broadway (Bank Entrance)
West Fargo, ND	210 Sheyenne St (Bank Drive-Up)

CREDIT NEEDS AND PRODUCTS

The bank currently participates in a broad range of community-based programs designed to meet the credit needs of its local communities through credit services, direct personal involvement of its employees, and cooperation with community officials and agencies.

The bank seeks to meet the credit needs of those doing business within our assessment area by making the following types of loans available to qualified borrowers on the basis of proper purpose and borrower qualifications:

- Agricultural loans
- Commercial loans
- Loans to nonprofit organizations
- Construction loans
- Small business loans
- Home purchase loans
 - 1-4 family unit loans
 - 5+ family unit loans
- Home equity loans
- Community development loans
- Consumer loans, including but not limited to:
 - Auto and recreational vehicle loans
 - Home improvement loans
 - Debt consolidation loans
 - Personal loans
 - Overdraft protection loans

The bank's thorough participation with a third-party provider makes Visa credit card applications available.

The bank also has a mortgage department that offers VA (Veteran's Administration), FHA (Federal Housing Association), First-Time Homebuyers, Rural Housing, Minnesota Housing Loans and North Dakota Housing loans.

The bank participates with the SBA (Small Business Administration), FSA (Farm Service Agency), and BND (Bank of North Dakota).

The bank offers investments and wealth management services through Choice Wealth, a division of Choice Financial Group.

The bank offers insurance through Choice Insurance, a division of Vizance Company..

DEPOSIT PRODUCTS

Choice Basic Checking

- \$100 minimum opening deposit
- No monthly service charges

Choice Plus Checking

- \$500 minimum opening deposit; Interest earned on balances of \$500 or more
- No monthly service charges
- Interest is compounded and credited monthly

First Choice Savings

- No minimum opening deposit
- No monthly service charges
- Interest is compounded and credited quarterly

Money Market Savings

- \$1,000 minimum opening deposit; Interest earned on balances of \$1000 or more
- Interest is compounded and credited monthly

Certificate of Deposit

- 3, 6, 12, 24, 36, 48, and 60 month terms available
- \$1000 minimum opening deposit
- A penalty may be imposed for early withdrawal

Individual Retirement Accounts

- 3, 6, 12, 24, 36, 48, and 60 month terms available
- \$100 minimum opening deposit
- A penalty may be imposed for early withdrawal

In addition, IntraFi Network's ICS and CDARS services are available.



CONSUMER FEE SCHEDULE

GENERAL CHARGES

Account Research	\$50/hour + \$1/ item (\$50 min)
Cashier's Checks	\$10
Deposit Item Return-Chargeback Fee	\$4
Check Cashing for Non-Customer	2% (\$10 minimum)
Check Images with Paper Statement	\$2
Checkbook Reconciliation	\$75/hour
Check Printing Fees	Price Varies
Collection Incoming	\$35
Collection (Including Outgoing & Foreign)	\$35 + costs
Copies of Statement Items	\$1
Counter Checks 4 checks/page	\$1/page
Deposit Adjustments	\$3
Deposited/Cashed Item Return Fee	\$4
Fax Service	\$1/page
Foreign Check Cashing Fee (Customer/Non-Customer)	\$10
Foreign Draft	\$25 + costs
Garnishment/Levy	\$75
Money Order (limited to \$500) Available to customers only	\$2
Notary Public (Non-Customer)	\$5
One Time Dormancy Fee	\$30
Paper Statement Fee	\$2/month
Photocopies	\$1/page
Stop Payment Submitted in Online Banking	\$34 \$30

WIRE TRANSFER FEES

Incoming Wire Transfer	
Domestic	\$10
International	\$20
Outgoing Wire Transfer	
Domestic	\$30
International	\$50

CARD SERVICES

ATM/Debit Card Int'l Exchange Fee	1%
Debit Card Replacement Card Fee	\$10
Debit Card Replacement Fee - Rush	\$35/50

CURRENCY SERVICES

Coin Counting/Rolling	1% (\$5 minimum)
Foreign Currency Exchange	\$12 shipping + costs

OVERDRAFTS

Overdraft Fee	\$34/item
----------------------	-----------

(Daily Overdraft Fee Cap \$204) An overdraft may be created by check, in-person withdrawal, or other electronic means. Choice Bank will not assess any overdraft fees on ATM or one-time debit card transactions made with your Choice Bank Debit Card which overdraw your account. As a courtesy to our customers, Choice Bank will waive an overdraft fee on an account overdrawn by \$50 or less.

SAFE DEPOSIT BOXES

Safe Deposit Box	Ask for rates
Key Deposit	\$25
Key Replacement	\$25
Late Payment Fee	\$20

BUSINESS PRODUCTS

Checking Accounts

- Options are designed to serve a broad range of organizations, from start-ups to nonprofits and corporations. We customize checking solutions based on business needs.

Savings Accounts

- With our varied account and interest options, we can help manage your excess cash.

Certificate of Deposits

- We will work with you to structure the right terms and maturity dates, as well as interest payment methods and maturity laddering to meet your cash flow needs.

Business Services

- Account Analysis Statements
- ACH Services
- ACH Positive Pay/Bill Pay
- Business Debit Cards
- Business Online Banking
- Check Positive Pay/International Banking Services
- Lockbox
- Merchant Card Services
- Mobile Banking
- Mobile Deposit
- Purchasing Cards
- Remote Deposit
- Wire Transfers
- Zero Balance Accounts

BUSINESS FEE SCHEDULE

GENERAL CHARGES

Account Replacement (if not using Secure Account Package)	
Replacement Fee	\$50
Monthly Monitoring Fee (Provided for a maximum of 2 months)	\$150
Account Research	\$50/hour + \$1/ item (\$50 min)
*Additional Statements	\$10/month
*Audit Confirmation	\$25
Cashier's Checks	\$10
Deposit Item Return-Chargeback Fee	\$4
Check Cashing (Non-Customer)	2% (\$10 minimum)
Checkbook Reconciliation	\$75/hour
Collection Incoming	\$35
Collection (Including Outgoing & Foreign)	\$35 + costs
Copies of Statement Items	\$1
Counter Checks 4 checks/page	\$1/page
Deposit Adjustments	\$3
*Deposit Return Item Special Handling	\$50 Min (Obtain Quote)
Fax Service	\$1/page
Foreign Currency Exchange	\$5 + BND costs
Foreign Deposit Items	\$5 per item + costs
Foreign Draft	\$25 + costs
Garnishment/Levy	\$150
Money Order (limited to \$500) Available to customers only	\$2
Money Service Business Designation Fee	Obtain Quote
Notary Public (Non-Customer)	\$5
One Time Dormancy Fee	\$30
Photocopies	\$1/page
*Reject Item	\$0.50
Stop Payment	\$34

DEBIT CARD SERVICES

International Exchange Fee	1%
Replacement Card Fee	\$10
Debit Card Replacement Fee - Rush	\$35/50

CURRENCY SERVICES

Coin & Currency Monthly Sweep Fee	\$150
Coin Counting/Rolling	1% (\$5 minimum)
*Coin Purchase	\$0.15/roll
*Currency & Coin Deposited Per \$100	\$0.25
*Currency Purchase Per strap/partial strap	\$0.60
*Non Standard Currency Purchase Custom straps	\$2.50

NIGHT DEPOSIT SERVICES

Key Deposit	\$15
Night Depository Lock Bags Per Bag	\$25
Lost Key	\$15
Non-Lock Deposit Bags	\$10

OVERDRAFTS

Overdraft Fee	\$34/item
----------------------	-----------

No maximum fee per day. An overdraft may be created by check, in-person withdrawal, or other electronic means. Choice Bank will not assess any overdraft fees on ATM or one-time debit card transactions made with your Choice Bank Debit Card which overdraw your account. As a courtesy to our customers, Choice Bank will waive an overdraft fee on an account overdrawn by \$50 or less.

SAFE DEPOSIT BOXES

Safe Deposit Box	
Box Fee	Ask for rates
Box Drilling	Ask for rates
Key Deposit	\$25
Key Replacement	\$25
Late Payment Fee	\$20

*These fees will be charged via analysis for all analyzed checking accounts. If fees are assessed to a non-analyzed account, fees will be hard charged.

LOAN TO DEPOSIT RATIO

Date	2021	2022	2023	2024
03/31	88.09%	88.31%	62.79%	68.40%
06/30	79.83%	96.26%	65.20%	70.60%
09/30	86.40%	91.33%	67.41%	71.70%
12/31	85.54%	74.49%	68.75%	66.10%

ONLINE SERVICES

The bank has a website – www.bankwithchoice.com

Services available include:

- Online banking
- Bill pay
- Apple and Android mobile app
- Text banking
- E-statements



LOCAL COMMUNITY ASSESSMENT AREA

The bank seeks to meet the credit needs of individuals and firms living and doing business within its communities. The bank has the following 8 assessment areas defined:

Bismarck

- Burleigh County
- Morton County (201, 202, and 203)

Dickinson

- Billings County
- Stark County

Fargo

- Cass County, ND
- Clay County, MN

Grafton

- Cavalier County
- Pembina County
- Walsh County

Grand Forks

- Grand Forks County, ND
- Polk County, MN

Steele

- Kidder County

LaMoure

- Dickey County
- LaMoure County

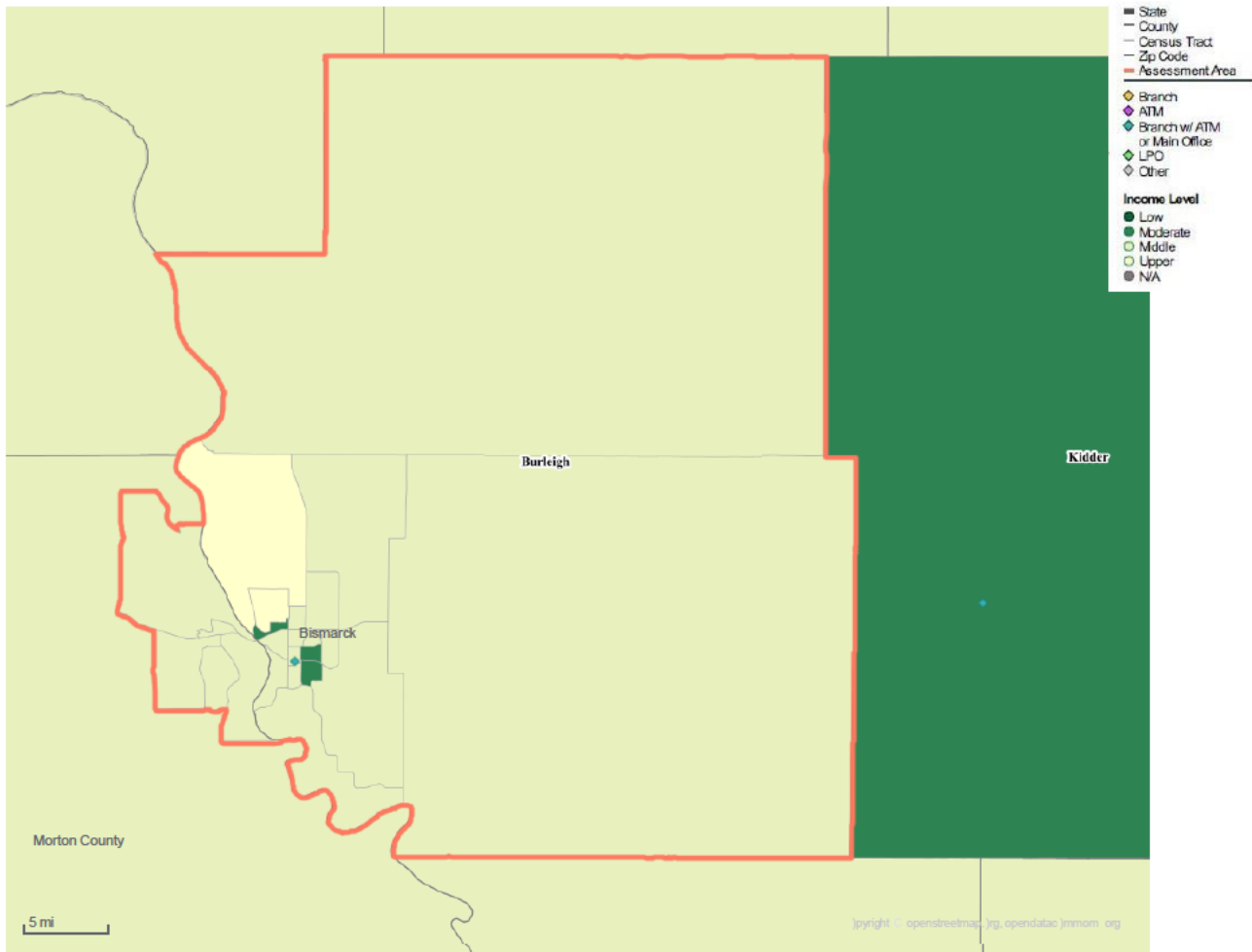
Minneapolis/St. Paul

- Anoka County
- Carver County
- Chisago County
- Dakota County
- Hennepin County
- Isanti County
- Ramsey County
- Scott County
- Sherburne County
- Washington County
- Wright County

Maps of these assessment areas can be found on Addendum A

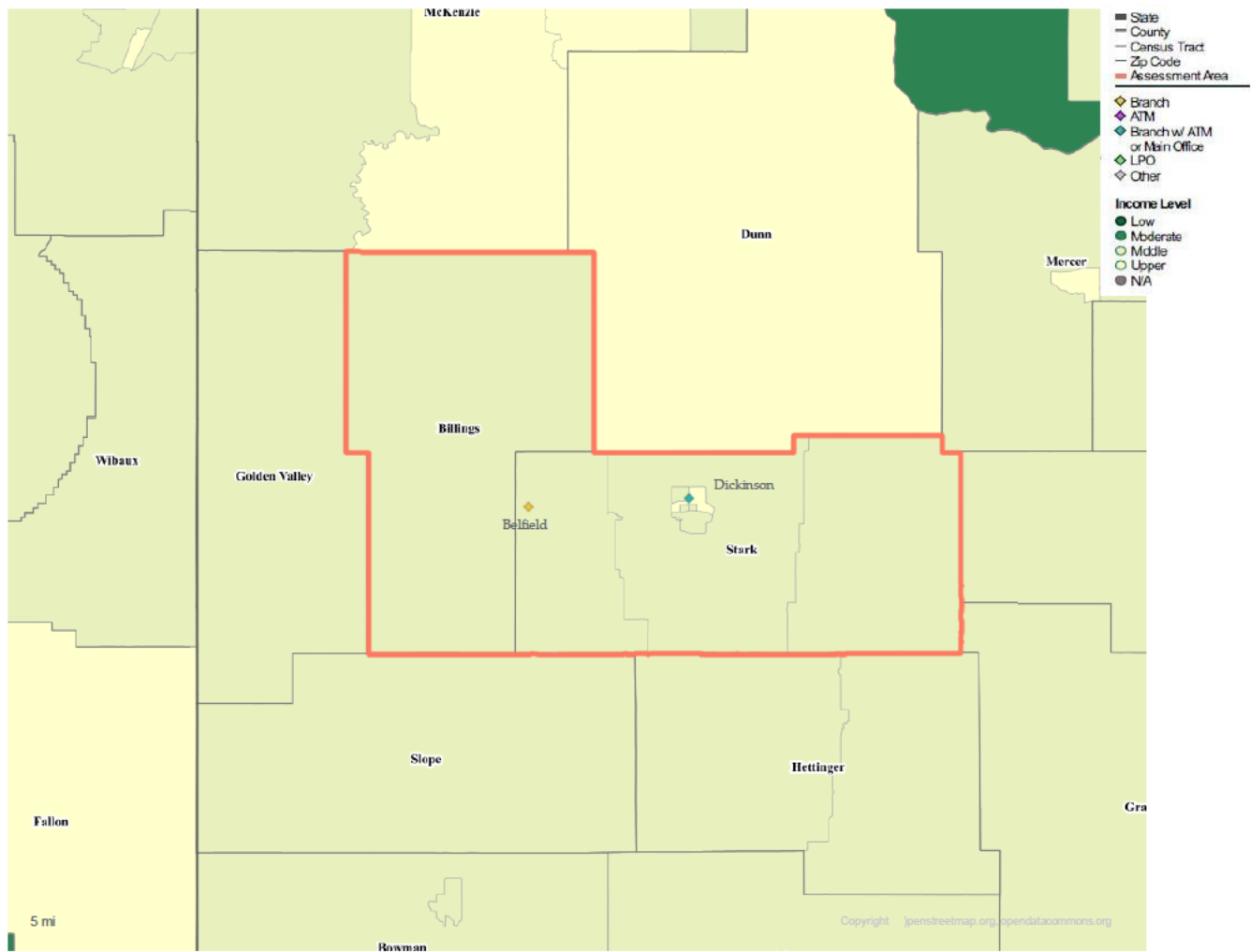
ADDENDUM A - MAPS

Bismarck Assessment Area



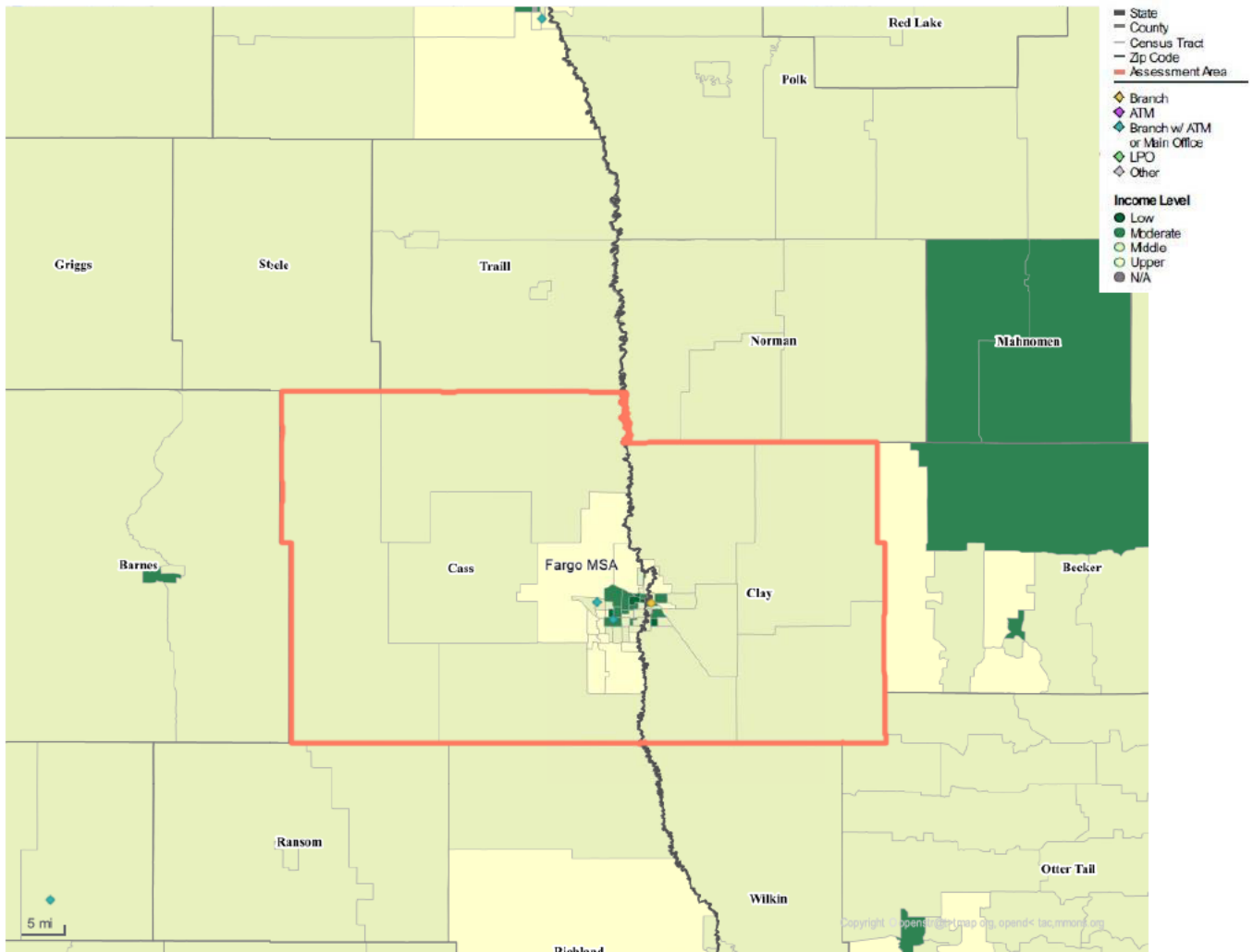
ADDENDUM A - MAPS

Dickinson Assessment Area



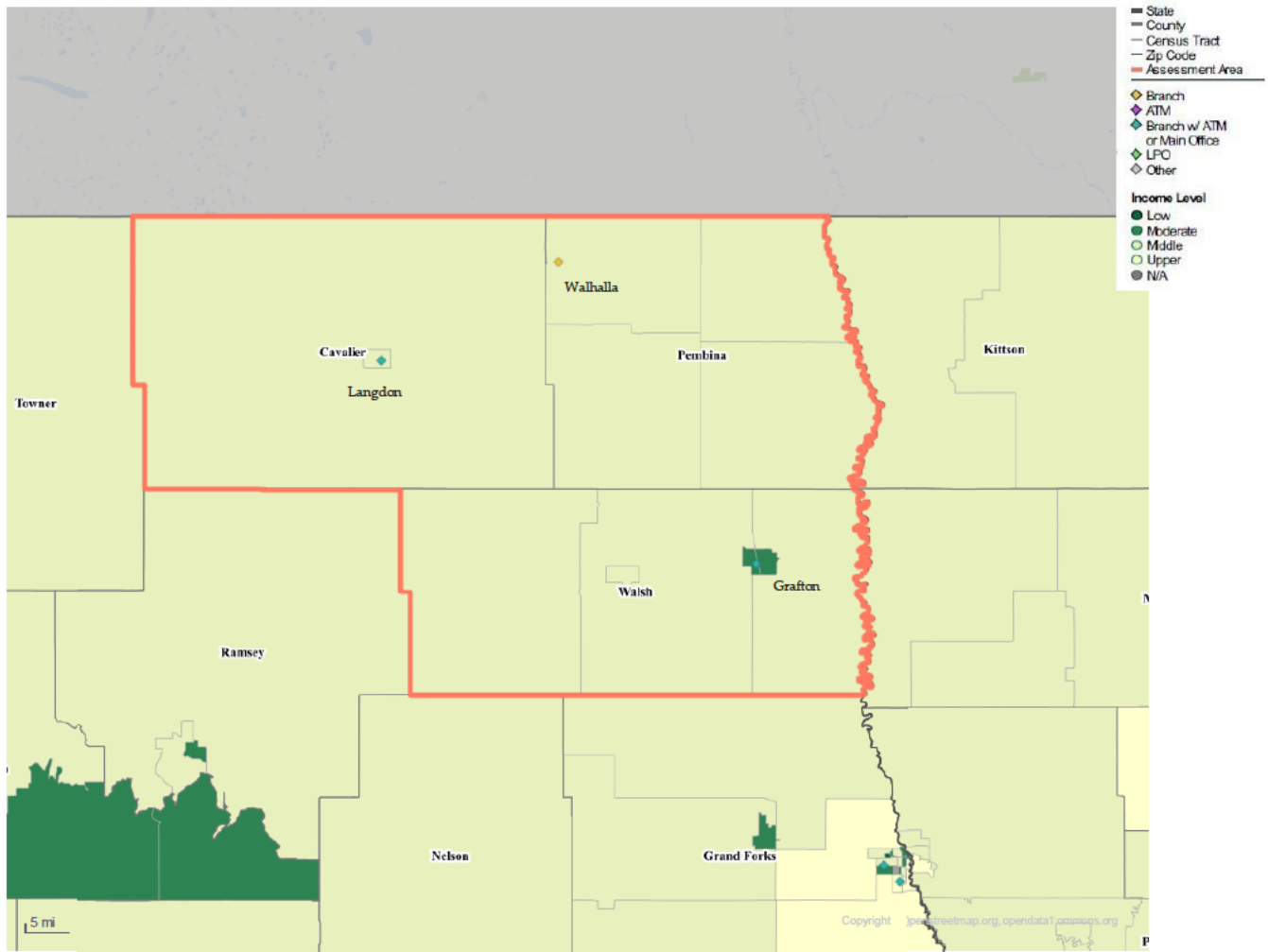
ADDENDUM A - MAPS

Fargo Assessment Area



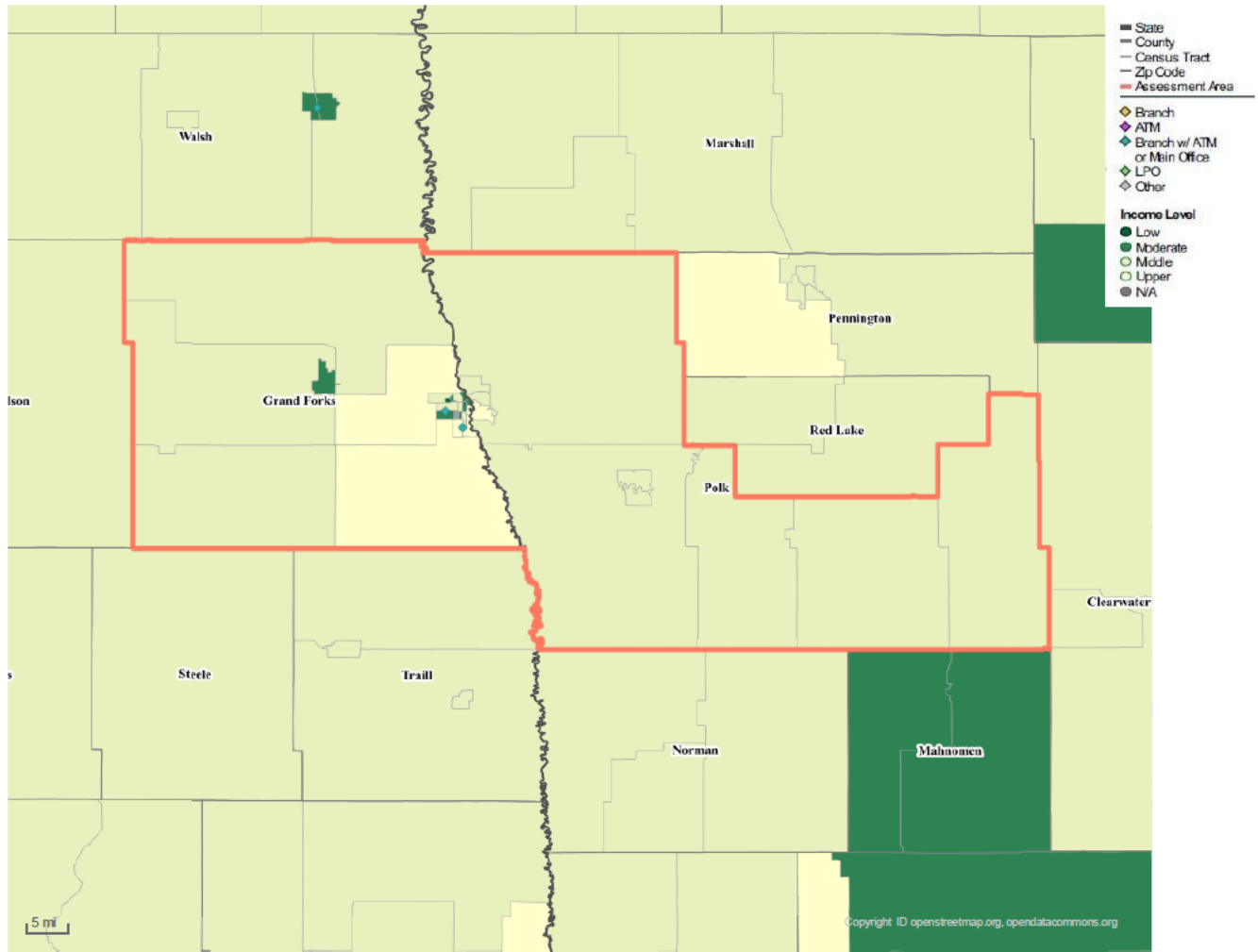
ADDENDUM A - MAPS

Grafton Assessment Area



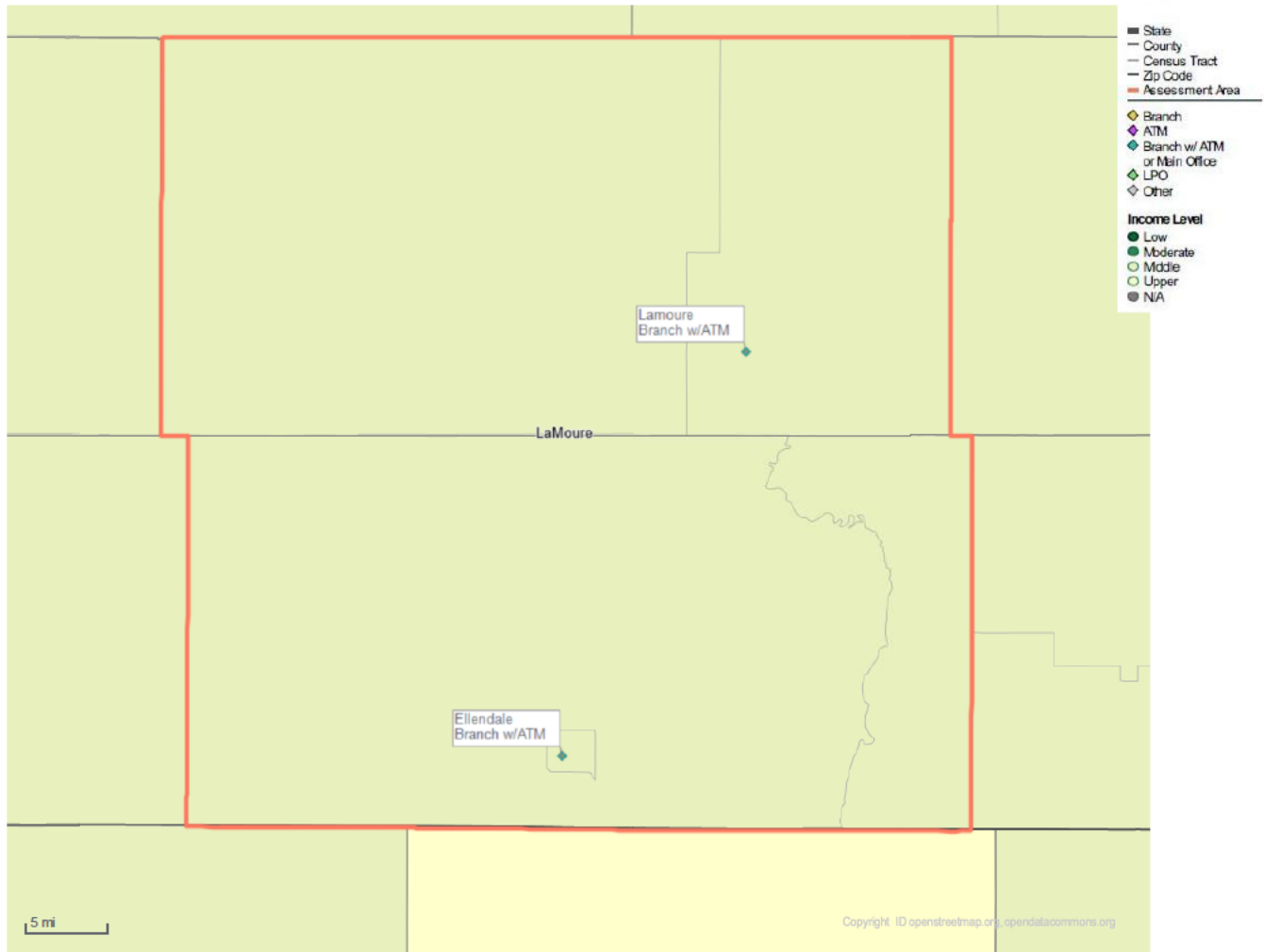
ADDENDUM A - MAPS

Grand Forks Assessment Area



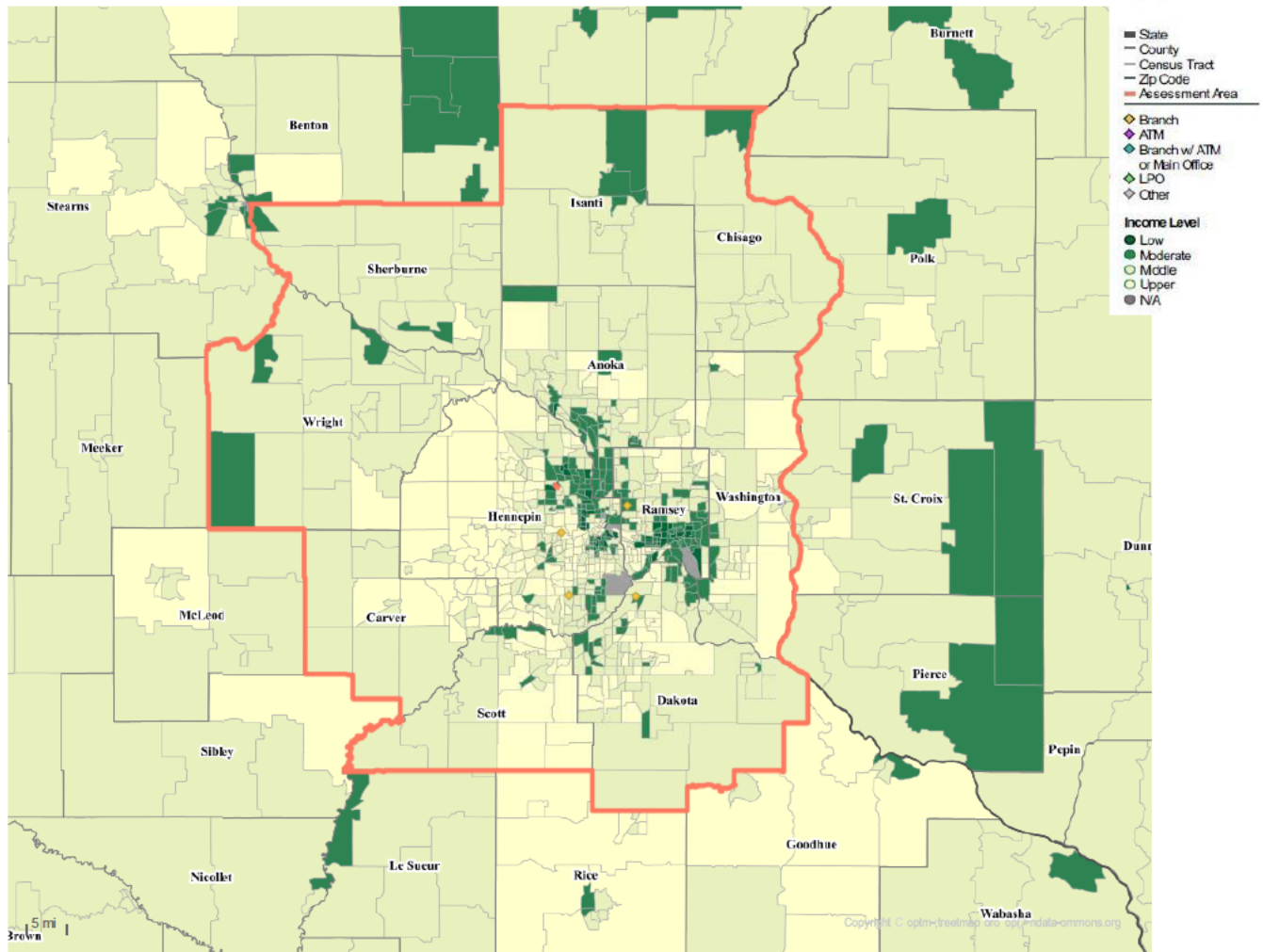
ADDENDUM A - MAPS

LaMoure Assessment Area



ADDENDUM A - MAPS

Minneapolis-St. Paul Assessment Area



ADDENDUM A - MAPS

Steele Assessment Area

